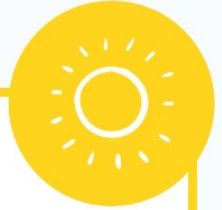
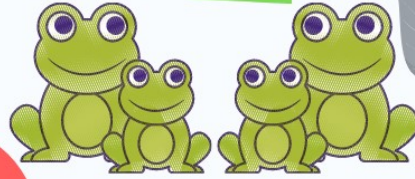


5 tips for creating a frog-friendly garden



CHOOSE A SAFE, SUNNY & SHADY SPOT

Firstly, choose a place in your garden that has a mixture of sun and shade and won't be disturbed too much by curious canines and cunning cats. Frogs can leap pretty high so you might want to consider a raised and partially covered area.

CREATE A REPTILE REFUGE

Place a flat object such as a rock or a slate roof tile on the ground in a particularly sunny spot. They absorb the sun's heat and may attract frogs and other amphibians or reptiles looking for a place to soak up the sun.

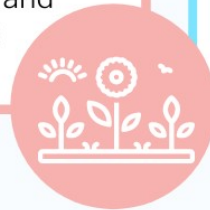
INSTALL A MINI POND

If you don't have a large pond, you can create a mini version. Frogs, toads and newts may still lay eggs in small water bodies, and it will help to keep them cool and moist in the summer. Sink a large tub or bucket into the ground, with safety in mind, or leave it standing and allow it to fill with rainwater. Aquatic plants, pebbles, and logs will make it a haven for frogs and other wildlife.



BUILD A BOG GARDEN

Find a full sun or partially shaded area and dig a 30-45cm deep hole. Use a plastic liner and pierce holes through the bottom for drainage. Backfill with the removed soil, add a bit of compost to improve moisture retention, and plant native marsh plants such as meadowsweet or marigold. Soak your bog garden with rainwater and add some old logs and rocks.



LEAVE LOGS IN A PILE

When the weather isn't frog-friendly, log piles can provide well-needed shelter. They can also attract insects for the frogs to feed on.

Allow vegetation to grow around and through the logs for better shelter and to attract a wider variety of frog food.



WHO'S IN YOUR GARDEN?



COMMON FROG



COMMON TOAD



SMOOTH NEWT



COMMON LIZARD



Why not like & share our top tips with your friends?