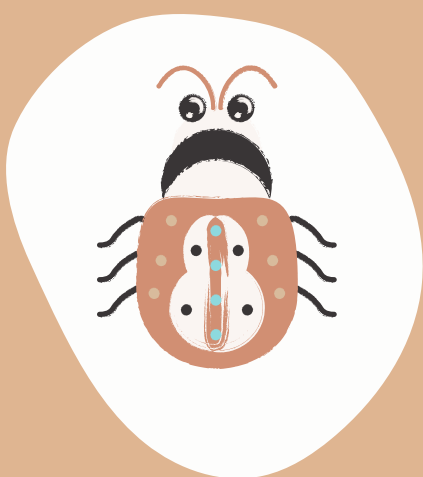


HOW TO SPOT PESKY PARASITES

Parasites can be extremely harmful to your dog and your human family – use our parasite guide to understand the signs to look out for



SIGNS YOUR DOG HAS FLEAS

- **Irritation** – Itching, scratching, chewing at themselves – leading to hair loss and red/irritated skin
- **You can see them** – Visible fleas or flea dirt (flea faeces) on your dog
- **No signs?** – Some dogs show no signs and fleas can be difficult to see, but fleas multiply quickly



SIGNS YOUR DOG HAS WORMS

- **Tapeworms:** Rice or spaghetti-like worms in faeces, 'scooting' their bottom on the ground, weight loss
- **Hookworms:** Pale gums, anaemia, weight loss, weakness, bloody diarrhoea, itchy paws, poor growth – can be fatal
- **Roundworms:** Vomiting, diarrhoea, swollen and painful belly, weakness, dull coat, weight loss
- **Whipworms:** Diarrhoea, bloody stools, anaemia, weight loss
- **Heartworm disease:** Mild persistent cough, lethargy, reluctance to exercise, weight loss, bulging ribs, difficulty breathing
- **Lungworm:** Weight loss, difficulty breathing, coughing (with blood), lethargy, unexplained bruising and bleeding, seizures, collapse, shock, blindness – can be fatal



SIGNS YOUR DOG HAS BEEN BITTEN BY A TICK

- **You can feel it** – You may feel a small bump on the skin – check your dog after walks
- **Skin irritation** – Your dog may scratch, bite, or chew where the tick is
- **Signs of Lyme disease:** Lethargy, appetite loss, fever, lameness, swollen lymph nodes

If you spot any of the signs above get in touch with our team straight away

We can also advise you on the best combination of preventative parasite treatments for your dog

