

PET POISONS

COMMON SPRING GARDEN PLANTS

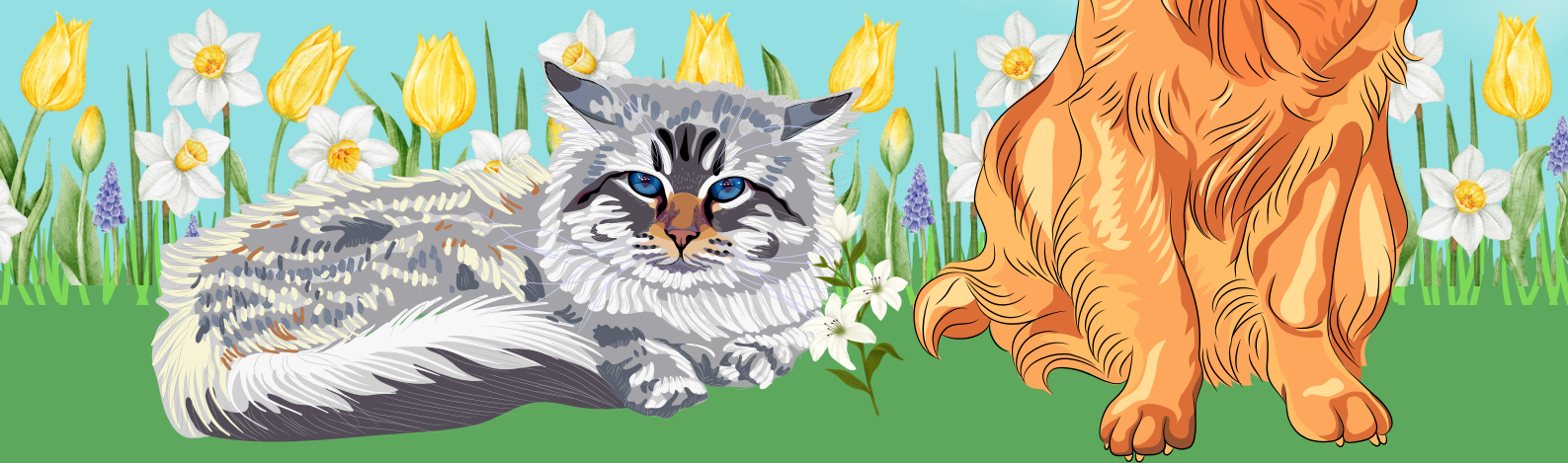
How plants poison pets...

Cats

- Poisoning from outdoor plants is rare in cats (poisoning from indoor houseplants is more common)
- Young, inquisitive cats and kittens are most at risk
- During grooming, cats may accidentally ingest bits of poisonous plant or seeds caught in their coat

Dogs

- Puppies are most at risk as they tend to chew plants, flowers, and bulbs more than adult dogs



What to do if you think your Pet has ingested a Poisonous Plant

SIGNS OF PLANT POISONING OFTEN INCLUDE DROOLING, MOUTH IRRITATION, VOMITING AND DIARRHOEA. IF YOU SUSPECT YOUR PET HAS EATEN A POISONOUS PLANT:

1. Immediately prevent any further access to the plant
2. Contact our practice immediately; DO NOT WAIT FOR SYMPTOMS
3. Do not try and make your cat or dog vomit unless specifically directed by one of our vets
4. Try and recall when and how much of the plant may have been ingested
5. Watch your pet carefully for any abnormal signs
6. Bring your pet and some of the plant with you to the practice



Commonly Found plants that are harmful to Dogs and Cats



Azaleas and Rhododendrons

- All parts of the plant can be harmful if chewed or swallowed
- Ingestion can cause irritation of the mouth, vomiting, diarrhoea, depression, breathing difficulties, and a high heart rate
- Severe cases can cause an irregular heartbeat, a drop in blood pressure, severe weakness of the legs, incoordination and can even be fatal



Foxglove

- All parts of the plant are poisonous
- Ingestion can cause vomiting, diarrhoea, an irregular heartbeat, and even heart failure and death



Rhubarb

- Ingestion of large amounts of the leaves can cause drooling, kidney failure, tremors, and can potentially be fatal



Daffodils

- All parts are harmful if eaten, but the bulbs are particularly toxic
- Can cause a skin reaction
- Ingestion can cause vomiting, diarrhoea, abdominal pain, an irregular heartbeat, tremors, convulsions, and a serious drop in blood pressure
- Can be fatal



Tulips

- All parts are harmful if eaten, but the bulbs are particularly toxic
- Considered less toxic than daffodils
- Can cause a skin reaction, mouth irritation, drooling, vomiting, diarrhoea, and depression



English Ivy

- Ingestion of leaves and berries can cause drooling, vomiting and diarrhoea
- In severe cases there may be blood present in the vomit and faeces
- Contact with ivy can also cause itchy skin reactions with a rash and sore, and reddened eyes



Lilies/ Lily of the Valley

- All parts of the lily plant are poisonous including pollen and water in a vase
- Ingestion can cause vomiting, diarrhoea, an irregular heartbeat, low blood pressure and disorientation
- Severe cases can result in seizures and coma

SEARCH 'POISONOUS PLANTS FOR DOGS' OR CATS ONLINE FOR A LONGER LIST

If you catch your pet eating a harmful plant do NOT wait for symptoms to appear – call our team of vets straight away. Signs of plant poisoning can include low energy, appetite reduction/loss, drooling, sickness, diarrhoea, blood in stools, drinking/urinating more, pale gums, twitching, tremors, seizures, breathing difficulties, collapse, and some poisons can be fatal.